

## Team Challenge Opportunities 2024

Below are volunteering opportunities most suited to your needs as requested.

**To note:** The tasks and priorities of ELBA's community partners are subject to change depending on their needs and the time you volunteer. Please ensure volunteers understand this possibility and remain enthusiastic and flexible about what they may get involved in.

### Gasworks Dock Partnership

Gasworks Dock Partnership (GDP) is a registered charity based in the London Borough of Newham (LBN). They are leading the regeneration and development of Cody Dock in Canning Town, London E16. Against the backdrop of LBN's very transient population plus the increased focus on the surrounding areas rapid regeneration, GDP aims to enable and inspire sustainable communities to emerge and grow by strengthening people's sense of place and providing opportunities for people to participate and engage with the transformation of the Lower Lea Valley. At the heart of its activities is the tireless efforts of volunteers who come along to help transform the site which has seen it rise from a derelict rubbish filled site to a vibrant community hub which is constantly developing to serve its local community.

**Volunteers will be taking part in a range of activities on the day. The activities you take part in will depend on the need of Gasworks at the time. See opportunities below:**

#### Citizen Science and Environmental Conservation



This is an exciting surveying project across the river Lea and around Cody Dock to help them learn more about the local environment and biodiversity to help them protect the river. Activities include Wildlife surveys; habitat conservation and creation; river safaris; community and river clean-ups. They offer a variety of opportunities to learn new skills through training workshops.

Regular training workshops before or on the day of volunteering, will include inductions to activities.

#### Gardening and Landscaping



It's the most exciting time of the year in the gardens! Would you like to know more about organic food growing or permaculture? Would you like to know how to grow vegetables in an urban garden? Gardening can be very empowering, join the team and help them to look after their plants, grow food for the community and simply enjoy the best harvest Newham has ever seen!

#### Construction and Site Maintenance





Give their construction team a hand by getting involved in one of their many build projects. No experience required, but they are always on the lookout for skilled trades to help their small team drive their fantastic builds!

### Brickwork and Dock Restoration



One of the biggest projects is the restoration of the Victorian brick-lined Dock. Join the team to learn traditional methods of brickwork techniques and get closer to the history and heritage of East London. The goal of the Dock Restoration project is very simple- to give the space back to the community making it full of life again, creating a space where people can live, work and enjoy their time off. No experience needed, training, personal protective equipment and tools provided!

**Address:** Cody Dock, 11c South Crescent, London E16 4T

**Date(s):** Flexible, with advanced notice

**Volunteer capacity:** 10-40 volunteers (up to 100 depending on staffing and project need)

**Cost:** £60 per head

### Victoria Park



Victoria Park is one of London's most important historic parks and its oldest public park, visited by millions of Londoners for almost 180 years as a place of healthy recreation, sports, play and relaxation. The park is the largest in Tower Hamlets at 86.18 hectares and has one of the highest visitor numbers of all the London parks with around 9 million visits per year. A wide range of attractions include three lakes, two fantastic playgrounds, several historic monuments in addition to this formal and informal sports, sponsored activities, events and festivals take place throughout the year. Many residents in the local area do not have access to a garden so the park is an important community resource that provides a green space for people.

**Volunteer opportunity:** With increasing popularity and thousands more visitors each year, Victoria Park is in need of regular support with maintenance and repair work. The project will be focused around gardening, general maintenance and possibly painting of benches/bins and other auxiliary items. The tasks are identified depending on the team size and date and are usually identified at the site visit but most likely may need to be confirmed very close to the volunteering date. Previous activities have included creating a woodland walk, planting the borders at Burdett Coutts, fence and bin restoration, maintaining the running track, and removing invasive species of plants.

**Address:** Victoria Park, London E9 7DD

**Dates:** Flexible : 0930-1530 (12pm-1pm lunch) variations can be discussed on site visit

**Volunteer Capacity:** 10 - 100 volunteers. If over 50 vols, date availability may be limited

**Cost:** £30 per person (minimum £300)



## Hubbub Plastic Fishing



Hubbub is a non-profit B Corp that runs bright, positive campaigns that help people live healthier, greener lives. Plastic Fishing is an educational volunteering opportunity that involves fishing for plastic along the docklands waterways.

**Volunteer Opportunity:** Volunteers are taken out in Poly-Mer, PET project and Vitamin Sea; the world's first fleet of electrical boats made from 99% recycled plastic! Volunteers will fish for plastic in the Canary Wharf waterways, competing to find the most (and most interesting) litter. Trips can include an educational session in which volunteers will learn about marine litter, plastics, the circular economy and more. Once back onshore volunteers will sort through the litter they collected to determine what can be recycled, and plastic bottles will be taken and put towards the construction of future recycled boats. Plastic fishing reduces the amount of litter in London's waterways, making it a greener space for London's wildlife. Any recyclable plastic collected will be recycled and plastic bottles will be used to produce more boats.

**Address:** Docklands Sailing and Watersports Centre, E14

**Date(s):** Flexible with notice – Monday – Friday throughout the year.

**Volunteer Capacity:** 16-66

**Cost:** 16-22 - £1500 (+VAT)

23-33 - £2000 (+VAT)

Neither of the above have a workshop included, (they can add workshop as extra if interested) and are 2.5 hrs

34-44 - £2600 (+VAT)

45-66 - £3600 (+VAT)

4hrs, includes a workshop as standard.

## Leyton Jubilee Park



Waltham Forest Council are committed to giving the community access to better leisure facilities and making the borough an even better place to live. As part of these plans they have brought Ive Farm sports ground and Marsh Lane Playing Fields together to create Leyton Jubilee Park, named to mark the Queen's Diamond Jubilee. They have invested heavily in the park, installing a spectacular pirate ship for 3+, an outdoor gym, natural play equipment, play areas, football pitches, basketball court and pavilion.

**Volunteer opportunity:** In the park, there is a large ecology area that is completely overgrown; therefore it is not well used by the public. They need volunteers to help maintain the overgrown site by cutting back bramble, trees and weeding. There is also scope in the near future to create pathways and build habitat piles. By doing this, the area will become safer which will encourage local and wider communities to use it more, as well as local schools for outdoor learning.



**Address:** Leyton Jubilee Park, Marsh Lane, E10 7BL

**Dates:** Flexible with sufficient amount of notice

**Volunteer capacity:** 10-80

**Cost:** £30 per head

## Mile End Park



Mile End Park is unusual. It was created as a result of a plan for London in the 1940s, which envisaged that there would be several green areas connecting different areas of London to the River Thames. As a result the park has been created from land brought into park uses over 50 years – much of it formerly housing and industrial buildings. Some of this land is separated by roads, railways and waterways. Mile End Park is an active and vibrant park which offers a wide range of facilities from sports to art in the environment. It is a linear space of approximately 90 acres alongside the Grand Union Canal. The Park has, and continues to forge genuine community partnerships with all in the local area.

**Volunteer Opportunity:** Our volunteer tasks combine elements of horticultural management / habitat management and carpentry activities. The horticultural/habitat management opportunities include coppicing, pruning, planting (bulbs, plants, trees, hedge), weed and nettle management, laying out woodchips and crushed concrete and shrub maintenance.

Carpentry tasks provide opportunities to build wooden picnic benches, vegetable planters, ponds, tables, painting, sanding, and laying out sand and compost.

**Address:** Mile End Play Pavilion, Locksley St, London E14 7EJ

**Dates:** flexible

**Volunteer capacity:** 10 - 100 volunteers. If over 50 vols, date availability may be limited

**Cost:** £30 per person (minimum £300), £50 for carpentry tasks

### **Team Challenge Good Practice:**

#### **Lead times**

The ideal lead time to book a Team Challenge is 6-8 weeks. This gives the team time to organise their volunteer leave and the community organisation time to prepare for the Team Challenge. While we can turn things around quicker, this may limit the options available and the type of task available.

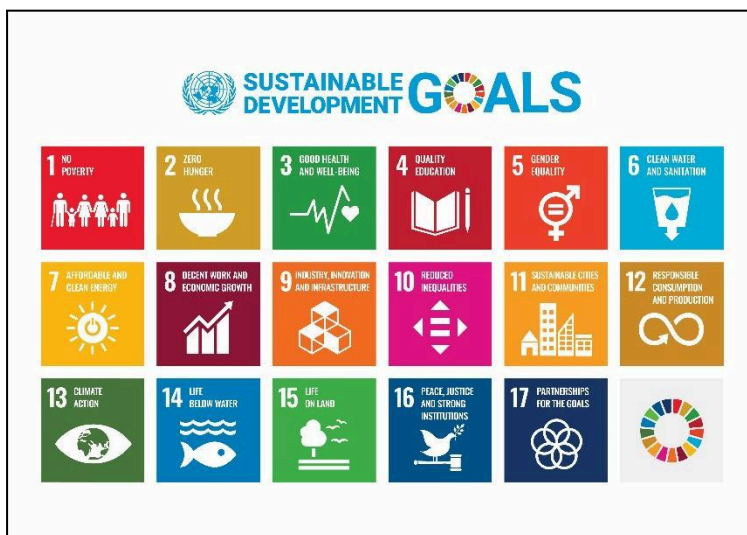
#### **Confirming numbers**

Teams will be asked to confirm numbers at least a week in advance of the Team Challenge. The invoice for the event will be based on this number. Some organisations ask for more notice and this will be detailed at a site visit or briefing call and will be reflected in the project brief.

**Amendments to volunteer numbers:** Please give as much notice as possible if volunteer numbers are going to be significantly different to the original booking. If significant changes are made within 2 weeks of the Team Challenge, the team may be asked to cover any costs incurred by the community partner (such as hiring additional staff, purchasing additional materials).

**Cancellations & rescheduling:** ELBA's cancellation policy states that if a team cancels after a site visit or briefing call, they will have to pay £250 + the cost of any tools, materials or staff directly to the community partner. Teams should give as much notice as possible if they need to postpone and should consider that the community partner may have already paid for tools, materials and staff. Teams that postpone at short notice may still be asked to cover these costs. **If enough notice is given and the Team Challenge is rescheduled for within 6 months of the original date, the £250 cancellation fee does not apply.** Even if the team agrees to pay the cancellation costs, community partners would much rather have the volunteer support. Rather than cancelling, please consider sourcing another team for the event. Some community partners have their own cancellation policies which will be detailed ahead of a site visit/briefing call and will be reflected in the project brief.

### **Sustainable Development Goals:**



ELBA have incorporated The Sustainable Development Goals (SDGs) which were adopted by the United Nations in 2015.

The 17 SDGs are integrated and ELBA has identified key goals that the volunteering and the community organisation have a **direct** impact on, whilst recognising that action in one area also impacts and contributes towards other goals that have an indirect impact. A key focus being on environmental sustainability where applicable.

For more information: <https://sdgs.un.org/goals>